

**SYK Antibody**  
**Affinity Purified Rabbit Polyclonal Antibody (Pab)**  
**Catalog # AP12763a****Specification**

---

**SYK Antibody - Product Information**

Application	WB,E
Primary Accession	<a href="#">P43405</a>
Other Accession	<a href="#">Q00655</a> , <a href="#">NP_003168.2</a> , <a href="#">NP_001167639.1</a> , <a href="#">NP_001128524.1</a> , <a href="#">NP_001167638.1</a>
Reactivity	Human, Mouse
Predicted	Pig
Host	Rabbit
Clonality	Polyclonal
Isotype	Rabbit IgG
Calculated MW	72066
Antigen Region	268-305

**SYK Antibody - Additional Information****Gene ID** 6850**Other Names**

Tyrosine-protein kinase SYK, Spleen tyrosine kinase, p72-Syk, SYK

**Target/Specificity**

This SYK antibody is generated from rabbits immunized with a KLH conjugated synthetic peptide between 268-305 amino acids from human SYK.

**Dilution**

WB~~1:2000

E~~Use at an assay dependent concentration.

**Format**

Purified polyclonal antibody supplied in PBS with 0.09% (W/V) sodium azide. This antibody is purified through a protein A column, followed by peptide affinity purification.

**Storage**

Maintain refrigerated at 2-8°C for up to 2 weeks. For long term storage store at -20°C in small aliquots to prevent freeze-thaw cycles.

**Precautions**

SYK Antibody is for research use only and not for use in diagnostic or therapeutic procedures.

**SYK Antibody - Protein Information****Name** SYK

**Function** Non-receptor tyrosine kinase which mediates signal transduction downstream of a variety of transmembrane receptors including classical immunoreceptors like the B-cell receptor (BCR). Regulates several biological processes including innate and adaptive immunity, cell adhesion, osteoclast maturation, platelet activation and vascular development (PubMed:[12387735](#), PubMed:[33782605](#)). Assembles into signaling complexes with activated receptors at the plasma membrane via interaction between its SH2 domains and the receptor tyrosine- phosphorylated ITAM domains. The association with the receptor can also be indirect and mediated by adapter proteins containing ITAM or partial hemITAM domains. The phosphorylation of the ITAM domains is generally mediated by SRC subfamily kinases upon engagement of the receptor. More rarely signal transduction via SYK could be ITAM-independent. Direct downstream effectors phosphorylated by SYK include DEPTOR, VAV1, PLCG1, PI-3-kinase, LCP2 and BLNK (PubMed:[12456653](#), PubMed:[15388330](#), PubMed:[34634301](#), PubMed:[8657103](#)). Initially identified as essential in B-cell receptor (BCR) signaling, it is necessary for the maturation of B-cells most probably at the pro-B to pre-B transition (PubMed:[12456653](#)). Activated upon BCR engagement, it phosphorylates and activates BLNK an adapter linking the activated BCR to downstream signaling adapters and effectors. It also phosphorylates and activates PLCG1 and the PKC signaling pathway. It also phosphorylates BTK and regulates its activity in B-cell antigen receptor (BCR)-coupled signaling. In addition to its function downstream of BCR also plays a role in T-cell receptor signaling. Also plays a crucial role in the innate immune response to fungal, bacterial and viral pathogens. It is for instance activated by the membrane lectin CLEC7A. Upon stimulation by fungal proteins, CLEC7A together with SYK activates immune cells inducing the production of ROS. Also activates the inflammasome and NF- kappa-B-mediated transcription of chemokines and cytokines in presence of pathogens. Regulates neutrophil degranulation and phagocytosis through activation of the MAPK signaling cascade (By similarity). Required for the stimulation of neutrophil phagocytosis by IL15 (PubMed:[15123770](#)). Also mediates the activation of dendritic cells by cell necrosis stimuli. Also involved in mast cells activation. Involved in interleukin-3/IL3-mediated signaling pathway in basophils (By similarity). Also functions downstream of receptors mediating cell adhesion (PubMed:[12387735](#)). Relays for instance, integrin-mediated neutrophils and macrophages activation and P-selectin receptor/SELPG- mediated recruitment of leukocytes to inflammatory loci. Also plays a role in non-immune processes. It is for instance involved in vascular development where it may regulate blood and lymphatic vascular separation. It is also required for osteoclast development and function. Functions in the activation of platelets by collagen, mediating PLCG2 phosphorylation and activation. May be coupled to the collagen receptor by the ITAM domain-containing FCER1G. Also activated by the membrane lectin CLEC1B that is required for activation of platelets by PDPN/podoplanin. Involved in platelet adhesion being activated by ITGB3 engaged by fibrinogen. Together with CEACAM20, enhances production of the cytokine CXCL8/IL-8 via the NFKB pathway and may thus have a role in the intestinal immune response (By similarity).

#### **Cellular Location**

Cell membrane. Cytoplasm, cytosol

#### **Tissue Location**

Widely expressed in hematopoietic cells (at protein level) (PubMed:[8163536](#)). Expressed in neutrophils (at protein level) (PubMed:[15123770](#)). Within the B-cell compartment, expressed from pro- and pre-B cells to plasma cells (PubMed:[8163536](#))

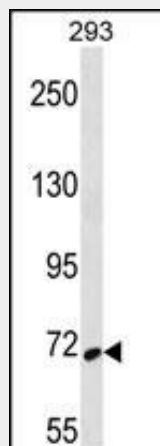
#### **SYK Antibody - Protocols**

Provided below are standard protocols that you may find useful for product applications.

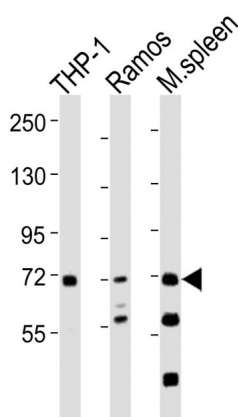
- [Western Blot](#)
- [Blocking Peptides](#)
- [Dot Blot](#)
- [Immunohistochemistry](#)

- [Immunofluorescence](#)
- [Immunoprecipitation](#)
- [Flow Cytometry](#)
- [Cell Culture](#)

## SYK Antibody - Images



SYK Antibody (Cat. #AP12763a) western blot analysis in 293 cell line lysates (35ug/lane). This demonstrates the SYK antibody detected the SYK protein (arrow).



All lanes : Anti-SYK Antibody at 1:2000 dilution Lane 1: THP-1 whole cell lysates Lane 2: Ramos whole cell lysates Lane 3: mouse spleen lysates Lysates/proteins at 20 µg per lane. Secondary Goat Anti-Rabbit IgG, (H+L), Peroxidase conjugated at 1/10000 dilution Predicted band size : 72 kDa Blocking/Dilution buffer: 5% NFDm/TBST.

## SYK Antibody - Background

This gene encodes a member of the family of non-receptor type Tyr protein kinases. This protein is widely expressed in hematopoietic cells and is involved in coupling activated immunoreceptors to downstream signaling events that mediate diverse cellular responses, including proliferation, differentiation, and phagocytosis. It is thought to be a modulator of epithelial cell growth and a potential tumour suppressor in human breast carcinomas. Alternatively spliced transcript variants encoding

different isoforms have been found for this gene. [provided by RefSeq].

### **SYK Antibody - References**

Thomas, D.H., et al. Blood 116(14):2570-2578(2010)  
Poeck, H., et al. J. Mol. Med. 88(8):745-752(2010)  
Rose, J.E., et al. Mol. Med. 16 (7-8), 247-253 (2010) :  
Pechloff, K., et al. J. Exp. Med. 207(5):1031-1044(2010)  
Utskarpen, A., et al. PLoS ONE 5 (7), E10944 (2010) :